

LET'S HOW

THE 19TH ANNUAL HALLOWEEN CHAMPIONSHIP SHOW



OCTOBER 23-27, 2019

MURIETA EQUESTRIAN CENTER

RANCHO MURIETA, CA

Zone 10 Medal Challenge 2'3

Nancy Patton \$4,000 Short/Med/Long Stirrup
Hunter Derby sponsored by Rosehill Stables

\$2,500 Mounted Costume Contest

\$16,000 "Bubba" Grand Prix

\$18,000 JEM Stables Haunted Hunter Derby

Carolyn Day Horsemanship Special

\$1,500 Nancy Gannon Children's Pony Hunter Derby

Dog Jumping & Dog Costume Contests

Eyeball Hunt

*Barn
Decorating
Contest*

*Hunt for a Jump,
Jump for a Jump,
Eq for a Jump*

REGIONAL 1 & JUMPER 3



Special Classes



\$18,000 HAUNTED HUNTER DERBY

Sponsored by **JEM Stables**
Jan and Emma Hainze

Class 450. Entry Fee \$350. Fences 3'

Must have entered two other classes at this show to be eligible. All entries work in first round - Top 12 return for a handy round. 2 option fences in Handy Round set at 3'3. Earn 1 bonus point per option fence completed successfully.

Special award to high scoring JR and Amateur. Prize money: 1st - 30%; 2nd - 22%; 3rd; 13%; 4th - 8%; 5th - 6%; 6th - 5%; 7th - 4%; 8th - 3%; 9th - 3%; 10th - 2%, 11th - 2%, 12th - 2%.

\$2,500 HUGHES LAW GROUP NON-PRO CHAMPIONSHIP

Class 308. Entry Fee \$150. Fences .70m 2,2b

Sponsored by the Hughes to encourage all young riders and young horses that are jumping a little bit higher than before. Must have entered one other class at this show and may not have jumped higher than .80m at this show. Custom embroidered saddle pads awarded to top eight finishers.

TERESA AMARO \$1,000 CHILD/AA JUMPER CHAMP.

Class 360. Entry Fee \$75. Fences 3'7 2.2b. Must have entered 1 other class at this show to be eligible. Saddle pads to the top 10.

\$3,000 ROBYN REICHENBERG LOW CHILD/ADULT JUMPER CHAMPIONSHIP

Class 340. Entry Fee \$150. Fences 3'3 2.2a

Must have entered 2 other classes at this show to be eligible. Entries may not be showing over 3'7 at this show

\$1,000 DOC NISSEN 3'3 PERFORMANCE CHAMPIONSHIP

Class 27, 28, 29, 30.

In honor of Dr. Bill Nissen.

NANCY GANNON \$1,500 CHILDREN'S PONY HUNTER DERBY

Class 514. Entry Fee \$75.

Fences 2' SM/MED - 2'6 LG. All ponies show in the first round, top 12 return for a handy round. Riders/ponies must have been entered and shown in this division to be eligible for this class.

\$1,000 CHILDREN'S HUNTER CHAMPIONSHIP

Class 614. Entry Fee \$75. Fences 3'0

Winner receives a cooler. Awards to top 8.

May not have shown over 3' at this show, except for the Children's Jumpers and must have been entered in one class in this division to be eligible.

\$16,000 'BUBBA' JUMPER STAKE,

Class 390. Entry Fee \$325. Fences 4'1 - 2.2a

In honor of Bubba Courtney. Must have entered and completed the course in at least one other jumper class at this show.

\$1,000 JOAN GAMBLE A/A HUNTER CHAMPIONSHIP

Class 65, 66, 67, 68, 69. Fences 3'0

Riders may not cross enter into any class with fences 3'3 or higher except Children's/AA Jumpers and Medal classes.

\$2,000 ENCHANTED FARMS CHAMPIONSHIP

LOW CHILD/ADULT HUNTERS

Class 613. Entry Fee \$125. Fences 2'6

Sponsored by Leslie Ross, winner receives a cooler and a leather halter and awards to top 8. Leslie was encouraged by the late Ivan McAlister to put back into the horse sport however one could. Must have been entered in two classes in the respective division and may not have shown over 3'0 at this show.

PHEASANT GROVE JUMP FOR A JUMP

Classes 347a, 347b, 347c Open,

348a, 348b, 348c Non Pro.

Entry Fee \$100. Fences 3'3

Scores from all 3 rounds added together to determine winner. Must have entered 2 other classes at this show to be eligible.

LEGACY FARMS 2'3 EQUITATION FOR A JUMP

Classes 606, 607. Entry Fee \$100. Fences 2'3

Open to all non-pro riders not showing over 2'9 at this show. Scores from both rounds added together. Brand new Jump goes home with the winner. Must have shown in 2 other classes at this show to be eligible for this class.

HUNTERVILLE 3' EQUITATION FOR A JUMP

Classes 611, 612. Entry Fee \$100. Fences 3'0

Scores from both rounds added together to determine winner. Brand new, Jump goes home with the winner. Must have shown in 2 other classes at this show to be eligible for this class. Open to non-pro riders only.

\$4,000 NANCY PATTON SHORT/ MEDIUM/LONG HUNTER DERBY

Sponsored by Rosehill Stables

Class 615. Entry Fee \$150. Fences 2'0.

Money to 12th place and ribbons to 12th place. Open only to riders not showing over 2'6 at this show. Riders may not have shown at 3' or higher in last 5 years. First round, hunter course with 2 option fences. One extra point for each option fence jumped successfully. Top 12 return for the second round with again 2 option fences and one extra point awarded for fences jumped successfully. Second round will be a handy round. Must have been entered in two classes of short/med/long stIRRUP or 2'6 Equitation classes to be eligible.



List of Officials



JUDGES

Ms. Marla Amormino (HU, HE)	California
Ms. Sandy Aston (HU, HE)	California
Mr. Nick Karazissis (HU, HE)	California
Ms. Kathy Kerron (HU, HE)	Oregon
Ms. Lisa Klink (HU, HE)	California
Mrs. Jean Marie Miller (HU, HE, HB)	Virginia
Mr. Larry Alcorn (J)	California
Mr. Max Von Zimmerman (J)	Washington

SHOW STEWARDS

Mrs. Patty Labon	Washington
Ms. Ruth Frazier	California

COURSE DESIGNERS

Mr. Mike Gallaway	Oregon
Mr. John Manning	Massachusetts
Mr. Gary Striker	California

SHOW STAFF

Mrs. Nancy Gannon	Show Manager
Mr. Trevor Peterson	Assistant Show Manager
Lauren Wasserman	Show Secretary
Molly Gallaway	Assistant Show Secretary
Megan Hainze	Assistant Show Secretary
Mr. Vic Carmen	Announcer
Mr. Marco Alfaro	Announcer/Starter
Ms. Katie Stein	Announcer/Starter
Mr. Terrell China	Announcer/Starter
Mr. Andy Burney	Announcer/Starter
Mr. Anthony Alfaro	Announcer/Starter
Mrs. Janelle Dewitt	Announcer/Starter
Teresa Amaro, Teresa Schimandle	Awards
Marge Anderson, David Laws	Special Events
Stephanie Woods	Hospitality
Dr. David Runk, DVM	Official Veterinarian
Derek Stanley	Official Farrier
Art Fingerle	Paradise First Aid
Deb Dawson & Grand Prix Photography	Official Show Photographers

ENTRIES CLOSE OCTOBER 11th, 2019

For stall assignments & further info:

Lauren Wasserman
(530) 304-2059

During show: Horse Show Office (530) 304-2059





Hunter Division



To be judged on performance and soundness. Manners will be emphasized and extreme speed penalized in Junior, Children's, and Amateur classes. Hunter rings are 120' x 250' and 230' x 115' with sand footing. Entries in Championship classes must have been entered in 2 classes in the respective divisions.

USHJA 2' HUNTERS

Open to horses and ponies, not to be jogged. May not cross enter any division with fences over 3 ft. Fences 2'0.

- | | | |
|----|--------------|------|
| 1. | Over Fences | \$40 |
| 2. | Over Fences | \$40 |
| 3. | Over Fences | \$40 |
| 4. | Over Fences | \$40 |
| 5. | Under Saddle | \$40 |

USHJA 2'3 HUNTERS

Open to horses and ponies. Not to be jogged. May not cross enter in any division with fences over 3'0. Fences 2'3.

- | | | |
|-----|-------------------|------|
| 6. | \$100 Over Fences | \$40 |
| 7. | \$100 Over Fences | \$40 |
| 8. | \$100 Over Fences | \$40 |
| 9. | \$100 Over Fences | \$40 |
| 10. | Under Saddle | \$40 |

USHJA 2'6 HUNTERS

Open to horses and ponies. No cross entry restrictions. Not to be jogged. Fences 2'6.

- | | | |
|-----|-------------------|------|
| 11. | \$100 Over Fences | \$40 |
| 12. | \$100 Over Fences | \$40 |
| 13. | \$100 Over Fences | \$40 |
| 14. | \$100 Over Fences | \$40 |
| 15. | Under Saddle | \$40 |

USHJA 2'9 HUNTERS

Open to horses and ponies. No cross entry restrictions. Not to be jogged. Fences 2'9.

- | | | |
|-----|-------------------|------|
| 16. | \$100 Over Fences | \$40 |
| 17. | \$100 Over Fences | \$40 |
| 18. | \$100 Over Fences | \$40 |
| 19. | \$100 Over Fences | \$40 |
| 20. | Under Saddle | \$40 |

USHJA 3' HUNTERS

- | | | |
|------|-------------------|------|
| 130. | \$100 Over Fences | \$40 |
| 131. | \$100 Over Fences | \$40 |
| 132. | \$100 Over Fences | \$40 |
| 133. | \$100 Over Fences | \$40 |
| 134. | Under Saddle | \$40 |

3' GREEN HUNTERS

Must jog for awards.

- | | | |
|-----|--------------------------|------|
| 21. | \$100 Over Fences | \$40 |
| 22. | \$100 Over Fences, Handy | \$40 |
| 23. | \$100 Over Fences | \$40 |
| 24. | \$100 Over Fences | \$40 |
| 25. | Under Saddle | \$40 |

3'3 GREEN HUNTERS

Must jog for awards.

- | | | |
|------|--------------------------|------|
| 135. | \$100 Over Fences | \$40 |
| 136. | \$100 Over Fences, Handy | \$40 |
| 137. | \$100 Over Fences | \$40 |
| 138. | \$100 Over Fences | \$40 |
| 139. | Under Saddle | \$40 |

"DOC NISSEN" 3'3 PERFORMANCE HUNTERS

Open to horses and ponies. No cross entry restrictions. Must jog. Fences 3'3.

- | | | |
|-----|-------------------------------------|------|
| 26. | \$250 Doc Nissen Over Fences | \$45 |
| 27. | \$250 Doc Nissen Over Fences, Handy | \$45 |
| 28. | \$250 Doc Nissen Over Fences | \$45 |
| 29. | \$250 Doc Nissen Over Fences | \$45 |
| 30. | Doc Nissen 3'3 Perf U/S | \$40 |

3'6 PERF. HUNTERS

Open to horses and ponies. No cross entry restrictions. Must jog. Fences 3'6

- | | | |
|------|--------------------------|------|
| 120. | \$100 Over Fences | \$40 |
| 121. | \$100 Over Fences, Handy | \$40 |
| 122. | \$100 Over Fences | \$40 |
| 123. | Under Saddle | \$40 |

3'6/3'9 GREEN HUNTERS

Open to horses in their 1st or 2nd year of showing over fences 3'6 or higher at rated shows. Horses must jog for ribbons. 1st Year-3'6 2nd Year-3'9. Fences 3'6-3'9.

- | | | |
|-----|--------------------------|------|
| 36. | \$100 Over Fences | \$40 |
| 37. | \$100 Over Fences, Handy | \$40 |
| 38. | \$100 Over Fences | \$40 |
| 39. | Under Saddle | \$40 |

3'9/4'0 PERFORMANCE

- | | | |
|------|--------------------------|------|
| 150. | \$200 Over Fences | \$45 |
| 151. | \$200 Over Fences, Handy | \$45 |
| 152. | \$200 Over Fences | \$45 |
| 153. | Under Saddle | \$40 |

MODIFIED HUNTERS JR/AM

Open to horses and ponies. No cross entry restrictions. Not to be jogged. Fences 3'3.

- | | | |
|-----|--------------|------|
| 31. | Over Fences | \$40 |
| 32. | Over Fences | \$40 |
| 33. | Over Fences | \$40 |
| 34. | Over Fences | \$40 |
| 35. | Under Saddle | \$40 |



JUNIOR HUNTERS-17/U

Horses must have a USEF measurement card.

Horses must jog for ribbons. Fences 3'6.

40.	Over Fences	\$40
41.	\$125 Over Fences	\$40
42.	Over Fences	\$40
59.	Under Saddle	\$40

A/O HUNTERS 18/OVER

Horses must jog for ribbons. Fences 3'6.

43.	Over Fences	\$40
44.	\$125 Over Fences	\$40
45.	Over Fences	\$40
70.	Under Saddle	\$40

3'3 A/O HUNTERS 18 & O

Horse may not cross enter A/A Hunters or 3'6 A/O Hunters.

Rider may show a different horse in the A/O Hunters.

Horses must jog for ribbons. Fences 3'3

46.	Over Fences	\$40
47.	\$125 Over Fences	\$40
48.	Over Fences	\$40
49.	Under Saddle	\$40

3'3 JUNIOR HUNTERS

Must jog for ribbons. Fences 3'3.

160.	\$125 Over Fences	\$40
161.	Over Fences	\$40
162.	Over Fences	\$40
163.	Under Saddle	\$40

LOW CHILDREN'S HUNTERS

Open to horses and ponies. No cross entry into any class at the show with fences exceeding 2'9 except age group equitation and ponies. Not to be jogged. Fences 2'6. Will follow Zone specs.

50.	\$100 Over Fences	\$40
51.	\$100 Over Fences	\$40
52.	\$100 Over Fences	\$40
53.	\$100 Under Saddle	\$40

LOW ADULT HUNTERS

Open to horses and ponies. No cross entry into any class at the show with fences exceeding 2'6 except age group equitation and ponies. Not to be jogged. Fences 2'9. Will follow Zone specs

55.	\$100 Over Fences	\$40
56.	\$100 Over Fences	\$40
57.	\$100 Over Fences	\$40
58.	\$100 Under Saddle	\$40

CHILD'S HUNTERS 17 & U

Not to be jogged. Division will be divided if entries warrant.

Open to horses and ponies. No cross entry into Junior Hunters.

Riders may not cross enter into any class with fences 3'3 or higher except Children's Jumpers and Medal Classes. Fences 3'.

60.	\$100 Over Fences	\$40
61.	\$100 Over Fences	\$40
62.	\$100 Over Fences	\$40
63.	Under Saddle	\$40

JOAN GAMBLE A/A HUNTERS 18 & O

Not to be jogged. Division will be divided if entries warrant.

Horse or rider may not cross enter into any Amateur Owner Hunter class at this show. Riders may not cross enter into any class with fences 3'3 or higher except AA Jumpers, JR/AM Modified Jumpers, EQ & Medal Classes. Fences 3'.

65.	\$250 Joan Gamble Over Fences	\$45
66.	\$250 Joan Gamble Over Fences	\$45
67.	\$250 Joan Gamble Over Fences	\$45
68.	\$250 Joan Gamble Over Fences	\$45
69.	Joan Gamble AA Hunter U/S	\$40

CHILDREN'S PONY HUNTERS

NorCal rated. Not to be jogged. S/M 2'; L 2'6

May Cross enter rated ponies.

95.	Over Fences	\$40
96.	Over Fences	\$40
97.	Over Fences	\$40
98.	Over Fences	\$40
99.	Under Saddle	\$40



OPPORTUNITY CLASSES

SHORT STIRRUP-PONIES

Not to be jogged. Rider not to have entered any classes over 2'6.

May not have shown at 3' or over in the last 5 years. Fences 2'0.

75.	Over Fences	\$40
76.	Over Fences	\$40
77.	Hunter Under Saddle	\$40
78.	Equitation Over Fences	\$40
79.	Equitation on the flat	\$40

SHORT STIRRUP

11/UNDER

Not to be jogged. Rider not to have entered any classes over

2'6. Riders not to have shown at 3' or over in the last 5 years.

May not have shown at 3' or over in the last 5 years. Fences 2'0.

80.	Over Fences	\$40
81.	Over Fences	\$40
82.	Hunter Under Saddle	\$40
83.	Equitation Over Fences	\$40
84.	Equitation on the flat	\$40

MEDIUM STIRRUP

12-17

Not to be jogged. Rider not to have entered any classes over 2'6.

Riders not to have shown at 3' or over in the last 5 years. May

not have shown at 3' or over in the last 5 years. Fences 2'0.

85.	Over Fences	\$40
86.	Over Fences	\$40
87.	Hunter Under Saddle	\$40
88.	Equitation Over Fences	\$40
89.	Equitation on the flat	\$40

LONG STIRRUP

18 & OVER

Not to be jogged. Rider not to have entered any classes over

2'6. Riders not to have shown at 3' or over in the last 5 years.

May not have shown at 3' or over in the last 5 years. Fences 2'0.

90.	Over Fences	\$40
91.	Over Fences	\$40
92.	Hunter Under Saddle	\$40
93.	Equitation Over Fences	\$40
94.	Equitation on the flat	\$40

Don't forget to vote
for the best

Staff
Costume!



PONY WORKING HUNTERS

USEF rated. To be jogged. S 2'3; M 2'6; L 2'9
May cross enter Children's Pony Hunters.

100. Over Fences	\$40
101. \$100 Over Fences	\$40
102. Over Fences	\$40
103. Under Saddle	\$40

GREEN PONY HUNTER

Open to ponies in their first year of showing.
Small 2'3; Med 2'6; 2'9. Must jog for awards.

104. Over Fences	\$40
105. Over Fences	\$40
106. \$100 Over Fences	\$40
107. Under Saddle	\$40

MODIFIED CH/AA HUNTER

Not to jog. Fences 2'9.

400. Over Fences	\$40
401. Over Fences	\$40
402. Over Fences	\$40
403. Under Saddle	\$40

THE "EVAN" HANDY HUNTERS

Open to all riders. Courses to include trot fences, walk fences, handy turns and any other tests the course designer deems appropriate. Fences 3' In honor of the best handy hunter, Sue Lightners 'Evan.'

108. \$300 Evan Handy Hunter	\$45
109. \$300 Evan Handy Hunter	\$45
110. Evan Handy Hunter Under Saddle	\$40

WARM-UP HUNTERS

900. Warm-Up Hunters 2'9	\$40
901. Warm-Up Hunters 3'	\$40
902. Warm-Up Hunters 3'3	\$40
903. Warm-Up Hunters 3'6/3'9	\$40
904. Warm-Up Hunters 3'9/4'	\$40
905. Warm-Up Hunters 2'	\$40
906. Warm-Up Hunters 2'3	\$40
907. Warm-Up Hunters 2'6	\$40
908. Warm-Up Equitation 3'3	\$40
909. Warm-Up Hunters 2'3/2'6/2'9	\$40
910. Warm-Up Hunters 2'	\$40
911. Warm-Up Hunters 2'3	\$40
912. Warm-Up Hunters 3'	\$40
913. Warm-Up Equitation 2'	\$40

BEGINNER CHILDREN'S/ AA HUNTERS

Open to horses and ponies. No entry allowed for any rider that has shown over 2'6 in the last 5 years.
Not to be jogged. Fences 2'3

154. Beginner CH/AA Hunter	\$40
155. Beginner CH/AA Hunter	\$40
156. Beginner CH/AA Hunter	\$40
157. Beginner CH/AA Hunter U/S	\$40



English Pleasure Hunt Seat

All classes in this division will receive points toward the USEF HOTY Award for "A" rated English Pleasure Hunt Seat

USEF RATED ENGLISH PLEASURE DIVISION

508. Open, Pleasure	\$30	513. \$2,000 "Mocha Grande" Pleasure Champ. Open	\$50
509. 17 & under Pleasure	\$30	Sponsored by Leslie Ross. Embroidered Saddle Pads to 8th place. Ribbons & Prize Money to 12th Place. Must have been entered in one other class in the Pleasure Division to be eligible.	
510. 18 & over Pleasure	\$30		
511. Mares Pleasure	\$30		
512. Stallions & Geldings Pleasure	\$30	517. Gentleman to ride Pleasure	\$30
		518. Ladies to ride Pleasure	\$30



\$1,500 NANCY GANNON CHILDREN'S PONY HUNTER DERBY

Fences 2' SM/MED 2'6 LG. All ponies will show in the first round and top 12 will return for a handy round. Riders must have been entered and shown in this division to be eligible for this class.

514. Entry Fee \$75



Equitation Division

To be judged on hands, seat and general horsemanship.



MEDAL CLASSES

Please see Class Specifications for eligibility requirements and class conduct. All medals are \$40.

200.	SAHJA Pony Medal	2'3	216.	NorCal Jr.	3'6
201.	Horse & Hound Pony	2'3-2'6	217.	NorCal Sr.	3'6
202.	NorCal Pony Medal	2'3-2'6-2'9	218.	Dover Saddlery USEF Jr.	3'6
203.	SAHJA Mini Medal	2'6	219.	Maclay Junior Medal	3'6
204.	Almaden Jr/Am	2'9	253.	USEF Pony Medal	2'3-2'6-2'9
205.	Onondarka 12 & U (12 qualifier)	3'0	263.	CPHA Jr/Am Foundation Eq.	3'3
206.	NorCal 3ft	3'0	264.	CPHA Junior, 17&U	3'6
207.	SAHJA Child/Adult	3'0	220.	WCE JR/AM	3'7
208.	Horse and Hound Jr/Am	3'0			
209.	Cloverleaf Equitation	3'0			
210.	Foxfield Medal 18 & over	3'3			
211.	RJW Jr/Am	3'3			
212.	USEF Adult	3'3			
213.	PCHA Horsemanship 14 & u	3'3			
214.	PCHA Horsemanship 35 & o	3'3			

BOO!



EQUITATION CLASSES

Championship Equitation classes will count towards show championships
Not to have won: Maiden-0, Novice-3, Limit-6 blue ribbons

FLAT

221.	11 & Under	\$40
222.	12-14	\$40
223.	15-17	\$40
224.	Amateur 18 -41	\$40
225.	Amateur 42 & Over	\$40
226.	Novice 17 & Under	\$40
227.	Novice 18 & Over	\$40
228.	Championship 17 & under	\$40
229.	Champ. Amateur 18 -40	\$40
230.	Champ. Amateur 41 & O	\$40
231.	Novice Championship	\$40
232.	Limit Championship	\$40

OVER FENCES

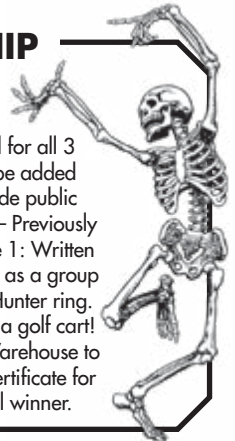
233.	14 & under	2'9	\$40
234.	15-17	3'0	\$40
235.	Amateur 18-40	3'0	\$40
236.	Amateur 41 & Over	3'0	\$40
237.	Novice any age	2'3	\$40
238.	Limit any age	2'6	\$40
239.	Novice Ch. any age	2'3	\$40
240.	Limit Ch. any age	2'6	\$40
241.	Junior Champ. 17/u	2'9	\$40
242.	Amateur Champ. 18-40	3'0	\$40
243.	Amateur Champ. 41 & O	3'0	\$40

CAROLYN DAY HORSEMANSHIP

600-601-602. 30 & Under - \$75

608-609-610. 31 & Over - \$75

Open to Juniors and Amateurs – 4 phase competition. Same horse to be used for all 3 riding phases. One or more judges to officiate. Scores from all 4 phases will be added together, highest total wins. Tie for first place only will work-off. No scores made public until completion of the competition. Previous winners of the over-all competition – Previously Sonoma Saddlery Horsemanship – no longer eligible for this competition. Phase I: Written test. Pick up test with entry number, turn in by Saturday noon. Phase II: Flat work as a group held Friday. Phase III: Gymnastics at 2'0. Saturday morning, first class – Main Hunter ring. Phase IV: Over fences 2'9. Champion of each section will do a final workoff for a golf cart! Cooler and Trophy to Champion of each division, \$500 gift certificate to Tack Warehouse to Res. Champion of each division. Golf cart to Grand Champion and \$500 gift certificate for the Res. Grand Champion. Sonoma Valley Stables Perpetual Trophy to overall winner.



CHILDREN'S PONY EQUITATION

SM/MED 2'0 LG 2'6

- | | | |
|------|-------------------|------|
| 244. | Over fences | \$40 |
| 245. | Flat | \$40 |
| 246. | Flat Championship | \$40 |

2'9 OPEN EQUITATION

Open to riders not showing in any class at this show over 3'3

- | | | |
|------|------------------------|------|
| 247. | Equitation Over Fences | \$40 |
| 248. | Equitation Over Fences | \$40 |
| 249. | Equitation Flat | \$40 |

LEADLINE

- | | | |
|------|-----------------------|------|
| 500. | Leadline Equitation | \$5 |
| 501. | Leadline Championship | \$10 |

2'6 OPEN EQUITATION

Open to riders not showing in any class at this show over 3'

- | | | |
|------|------------------------|------|
| 250. | Equitation Over Fences | \$40 |
| 251. | Equitation Over Fences | \$40 |
| 252. | Equitation Flat | \$40 |



Walk Trot Division



WALK TROT 8 & UNDER

To work both directions of the ring at the walk and the trot. Champ classes will be required to demonstrate a figure eight and answer a question

- | | | |
|------|-----------------------------|------|
| 502. | Walk-Trot Equitation | \$20 |
| 503. | Walk-Trot Champ. Equitation | \$20 |



SAHJA
Approved!!!

WALK TROT OPEN

Will be divided by age if entries warrant. May not cross enter any class that canters or goes over fences.

- | | | |
|------|------------|------|
| 504. | Pleasure | \$25 |
| 505. | Equitation | \$25 |
| 506. | Test | \$25 |
| 507. | Obstacle | \$25 |

CROSS RAIL DIVISION 1'3

Not to be showing over 1'3 at this show.

- | | | |
|------|-----------------------|------|
| 270. | Cross Rail Hunter | \$35 |
| 271. | Cross Rail Hunter | \$35 |
| 272. | Cross Rail Eq. Over | \$35 |
| 273. | Cross Rail Hunter U/S | \$35 |
| 274. | Cross Rail Eq., Flat | \$35 |



SAHJA MINI STIRRUP

Do not need to be a SAHJA member to enter. Open to all JR/AM riders who have never shown 2' or above (short, medium, long stirrup). To be shown over a cross rail course of 18". Trotting allowed.

- | | | |
|------|---------------|------|
| 275. | EQ Flat W/T/C | \$35 |
| 276. | HUS W/T/C | \$35 |
| 277. | EQ Over 18" | \$35 |
| 278. | Hunter 18" | \$35 |



Hunter Breeding



HUNTER BREEDING

- | | | |
|------|-------------------|------|
| 700. | Yearling | \$40 |
| 702. | Two Year Olds | \$40 |
| 704. | Three Year Old | \$40 |
| 706. | Best Young Hunter | ---- |

PONY HUNTER BREEDING

- | | | |
|------|-----------------|------|
| 708. | Yearling | \$40 |
| 710. | Two Year Olds | \$40 |
| 712. | Three Year Old | \$40 |
| 714. | Best Young Pony | ---- |



70 & OVER DIVISION

Riders will be judged on their ability to impress the judges. Horses and ponies allowed. No entry fee. Special awards to all entries

- | | |
|------|-------------------------|
| 140. | Work at Will Equitation |
| 141. | Cross Bar Hunter |
| 142. | Hunter Under Saddle |



Jumper Division



In all jumper classes ties involving 1st place will jump off. Ties not involving 1st will be broken by the fastest time in the first round. Jumping orders will be drawn and posted in accordance with USEF rules. All entries in championship classes must have been entered in 2 other classes in the respective division.

LOW PONY

Fences 2'3

- 300. 2.2b Argentine \$40
- 301. 2.2c Argentine \$40
- 302. 2, 2.1 Argentine \$40
- 303. \$1000 Champ 2,2b Arg. \$80**

BEGINNING .70M

Fences 2'3

- 304. 2.2b Argentine \$40
- 305. 2.2b Argentine \$40
- 306. \$500 2.2c Argentine \$45
- 307. \$500 2, 2.1 Argentine \$45

308. \$2,500 Hughes Law Group Non-Pro Championship 2,2b Arg. \$125

Horses entered in this class may not have been shown in any other class at this show over .80m. Open to non-pros only. Not to count towards show champ.

.75M JUMPERS

Fences 2'5.

- 309. 2.2b \$40
- 310. 2.2b \$40
- 311. \$500 2.2c \$45
- 312. \$500 2, 2.1 \$45
- 313. \$1000 Non-Pro 2,2b \$80**

Horses entered in this class may not have been shown in any other class at this show over .85m. Open to non-pros only. Not to count towards show champ.

.80M JUMPERS

Fences 2'7.

- 314. 2.2b \$40
- 315. 2.2b \$40
- 316. \$500 2.2c \$45
- 317. \$500 2, 2.1 \$45

318. \$1000 Non-Pro Championship 2,2b \$80

Horses entered in this class may not have been shown in any other class at this show over .90m. Open to non-pros only. Not to count towards show champ.

.85M JUMPERS

Fences 2'9.

- 319. 2.2b \$40
- 320. 2.2b \$40
- 321. 2.2c \$40
- 322. 2, 2.1 \$40

323. \$1000 Championship 2,2b \$80

Horses entered in this class may not have been shown in any other class at this show over .95m

.90M JUMPERS

Fences 2'11

- 324. 2.2b \$40
- 325. \$500 2.2b \$45
- 326. 2.2c \$40
- 327. \$500 2, 2.1 \$45
- 328. 2.2c \$40

.95M JUMPERS

Fences 3'1

- 329. 2.2b \$40
- 330. 2.2b \$40
- 331. 2.2c \$40
- 332. 2, 2.1 \$40
- 333. **Red Horse Classic \$1000 Championship 2,2b \$80**

Sponsored by Connie Whitaker-NON PRO ONLY

Cooler to Champ and Saddle Pads to 8th place.

LOW CHILDREN'S

Fences 3'3

- 334. 2.2b \$40
- 335. 2.2c \$40
- 336. 2, 2.1 \$40

ADDITIONAL CLASSES

- 460. .75M 2.1 \$40
- 461. .75M 2.1 \$40
- 462. .80M 2.1 \$40
- 463. .80M 2.1 \$40
- 464. .85M 2.1 \$40
- 465. .85M 2.1 \$40
- 466. .90M 2.1 \$40
- 467. .90M 2.1 \$40
- 468. .95M 2.1 \$40
- 469. .95M 2.1 \$40



Marc and Melanie Hughes

Proud sponsor of class 308
THE .70M CHAMPIONSHIP
Pads are awarded to top 8.



HUGHES LAW GROUP
FAMILY LAW ATTORNEYS

www.hugheslawgroup.com
PHONE (916) 444-7704

LOW ADULT

Fences 3'3

337.	2.2b	\$40
338.	2.2c	\$40
339.	2, 2.1	\$40

\$3,000 ROBYN REICHENBERG LOW CHILD/ADULT CHAMPIONSHIP

Fences 3'3

340.	2,2a	\$150
------	------	-------

1.00M JUMPERS

Fences 3'3

341.	2.2b	\$40
342.	2.2b	\$40
343.	\$500 2.2c	\$45
344.	2, 2.1	\$40
345.	\$500 2.2c	\$45
346.	2.2c	\$40



JUMP FOR A JUMP

Fences 3'3 Entry for section - \$100

Overall winner will take home a brand new jump!

347a, 347b, 347c, Open

348a, 348b, 438c, Non Pro 2, 2.1

1.05M JUMPERS

Fences 3'5

349.	\$500 2.2b	\$45
350.	2.2b	\$40
351.	2.2c	\$40
352.	2, 2.1	\$40

CHILDREN'S JUMPERS

Fences 3'7

353.	2.2b, 3'7	\$40
354.	2.2c, 3'7	\$40
355.	2, 2.1, 3'7	\$40

ADULT AMATEUR JUMPERS

Fences 3'7

357.	2.2b, 3'7	\$40
358.	2.2c, 3'7	\$40
359.	2, 2.1, 3'7	\$40

360. \$1,000 Teresa Amaro Child/Adult Championship

Entry Fee \$80. 3'7. 2.2a Must have been shown in two other classes in these respective divisions to be eligible. Saddle pads to all top finishers.

JR/AM MODIFIED

Fences 3'11

361.	2.2b	\$40
362.	2.2c	\$40
363.	2, 2.1 (\$125)	(\$20) \$60
364.	\$500 Champ 2,2b	(\$20) \$60

1.10M JUMPERS

Fences 3'7

365.	2.2b (\$100)	\$40
366.	2.2b (\$100)	\$40
367.	2.2c (\$100)	\$40
368.	2, 2.1 (\$100)	\$40
391.	2, 2.1 (\$100)	\$40
392.	2.2c (\$100)	\$40



1.15M JUMPERS

Fences 3'9

369.	2.2b (\$100)	\$45
370.	2.2b (\$100)	\$45
371.	2.2c (\$100)	\$45
372.	2, 2.1 (\$100)	\$45
373.	2.2c (\$100)	\$45

1.20M JUMPERS

Fences 3'11

374.	2.2b (\$100)	\$45
375.	2.2b (\$100)	\$45
376.	2.2c (\$100)	\$45
377.	2, 2.1 (\$100)	\$45
378.	2.2c (\$100)	\$45

JR/AM OWNER

Fences 4'1

379.	2.2b (\$125)	\$45
380.	2.2c (\$125)	\$45
381.	2, 2.1 (\$125)	\$45
382.	\$500 Champ. 2, 2b	\$45

1.25M JUMPERS

Fences 4'1

383.	2.2b (\$125)	\$45
384.	2.2b (\$125)	\$45
385.	2.2c (\$125)	\$45
386.	2.2c (\$125)	\$45

1.30M JUMPERS

Fences 4'3

387.	2.2b (\$125)	\$45
388.	2.2c (\$125)	\$45
389.	2.2c (\$125)	\$45

390. \$16,000 'BUBBA' GRAND PRIX



Entry Fee \$325. 4'1 2.2a Must have been entered, and completed the course in at least one other jumper class at this show.

Prize money - 1st 30%; 2nd 22%; 3rd 15%;

4th 10%; 5th 7%; 6th 6%; 7th & 8th 5%

55 & OVER JUMPERS

391.	\$100 2.2c	\$45
392.	\$100 2.2.1	\$45
393.	\$100 2.2c	\$45



Northern California 2'3 Mini Medal Challenge

Class 510

Open to riders that have placed first or second in any equitation or medal class 2' to 2'9 during the current show year. Riders who have won a 3' or higher equitation or medal class during this show year are not eligible. Exception (Large ponies that have won a pony medal or equitation class). Riders must be a member of the USHJA. Two rounds and work off of minimum top 5. Fence height 2'3.

Entry Fee: \$100

Champion wins a golf cart. Reserve Champion receives \$1,000 shopping spree at The Tack Warehouse. 3rd place \$500 shopping sprees at Tack Warehouse.

**Shopping spree may not be exchanged for cash*

Awards will be given to 10th place



The Eighteenth Annual
Jago Memorial

Dog Costume Contest



**Saturday before
the Pup Pup High
Jump in the Main
Hunter Ring. Prizes
for large dogs and
small dogs**

PUP PUP HIGH JUMP!

sponsored by
Patrice Corbridge/Cottonwood Farms
All dogs big and small!

Three parts to this competition...
a big dog group, medium dog group,
and small dog group that will each
receive their own doggy prize!

Each dog will have the opportunity
to attempt the jump twice.

Small group will start at 1',
Medium group to start at 2'.

Large group at 2'6"

*To be held Saturday Night before the
Haunted Hunter Derby.*



FEED AND BEDDING PRE-ORDER FORM

LET'S SHOW HALLOWEEN

Call: 530-304-2059

FEED AND BEDDING TO BE ORDERED AT HORSE SHOW OFFICE
WEEKEND ORDERS NEED TO BE PLACED BY 12:00 P.M.

QTY	ITEM
	Alfalfa
	Orchard Grass Hay
	All in One
	Crimped Oats
	Omolene 200
	Omolene 400
	Purina Equine Senior
	Satin Finish
	Stable Mix Pellets
	Strategy GX
	Ultium
	Wheat Bran
	Shavings

ARRIVAL DATE/TIME _____

TRAINER/STABLE NAME _____

HORSE OWNER'S NAME _____

PHONE _____

*****Note*****

**All bagged feed must be ordered by
Tuesday for the week**

Golf Cart Rentals!



GIPSON GOLF CARTS

Call Zach at
(916) 806-0920

or email
ZachBowden@sbcglobal.net

Let's Show Tentative Schedule Wednesday, October 23

Jumper Ring 1 – 8am Anderson Ring Witches n Warlocks

(All classes Table 2.2b unless otherwise noted)

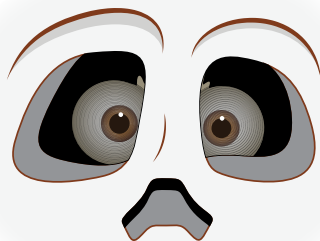
341.	1.00m	3'3
349.	1.05m	3'5
365.	1.10m	3'7
369.	1.15m	3'9
374.	1.20m	3'11
383.	1.25m	4'1
387.	1.30m	4'3



Jumper Two – 8am Boo's n Bones

(All classes Table 2.2b unless otherwise noted)

304.	Beginning Arg.	2'3
309.	.75m	2'5
460.	.75m (2,2.1)	2'5
314.	.80m	2'7
462.	.80m (2,2.1)	2'7
319.	.85m	2'9
464.	.85m (2,2.1)	2'9
324.	.90m	2'11
466.	.90m (2,2.1)	2'11
329.	.95m	3'1
468.	.95m (2,2.1)	3'1



Hunter Ring 1 – Main Indoor – 8am Ghosts n Ghouls

116.	Warm Up Hunter	2'9
17.	\$100 USHJA 2'9 Hunter	2'9
16.	\$100 USHJA 2'9 Hunter	2'9
20.	USHJA 2'9 Hunter U/S	U/S
902.	Warm-Up Hunter	3'0
130.	\$100 USHJA 3'0 Hunter	3'0
131.	\$100 USHJA 3'0 Hunter	3'0
21.	\$100 3'0 Green	3'0
22.	\$100 3'0 Green	3'0
134.	USHJA 3'0 Hunter	U/S
25.	3'0 Green Hunter	U/S
901.	Warm-Up Hunter	3'3
26.	\$100 Doc Nissen 3'3 Performance Hunter	3'3
27.	\$100 Doc Nissen 3'3 Performance Hunter	3'3
30.	Doc Nissen 3'3 Performance Hunter	U/S
135.	\$100 3'3 Green Hunter	3'3
136.	\$100 3'3 Green Hunter	3'3
139.	3'3 Green Hunter	U/S
903.	Warm Up Hunter	3'6
120.	\$100 3'6 Performance Hunter	3'6
121.	\$100 3'6 Performance Hunter	3'6
36.	\$100 3'6/3'9 Green Hunter	3'6/3'9
37.	\$100 3'6/3'9 Green Hunter	3'6/3'9
904.	Warm-Up Hunter	3'9/4'0
150.	\$200 Performance Hunter	3'9/4'0
151.	\$200 Performance Hunter	3'9/4'0

Hunter Ring 2 – Small Indoor – 8am Pumpkins a Go-Go

905.	Warm-Up Hunter	2'0
1.	USHJA 2' Hunter	2'0
2.	USHJA 2' Hunter	2'0
906.	Warm-Up Hunter	2'3
6.	USHJA 2'3 Hunter	2'3
7.	USHJA 2'3 Hunter	2'3
907.	Warm-Up Hunter	2'6
11.	USHJA 2'6 Hunter	2'6
12.	USHJA 2'6 Hunter	2'6

Let's Show Tentative Schedule Thursday, October 24

Jumper Ring 1 – 8am Anderson Ring Witches n Warlocks

(All classes Table 2.2b unless otherwise noted)

342.	1.00m	3'3
350.	1.05m	3'5
366.	1.10m	3'7
370.	1.15m	3'9
375.	1.20m	3'11
384.	1.25m	4'1
388.	1.30m	4'3
367.	1.10m	3'7
353.	Children's	3'7
357.	A/A	3'7



\$16,000 Bubba Grand Prix and Pizza Party Sponsored by Full Circle Farm, Inc.

Jumper Two – 8am Boo's n Bones

(All classes Table 2.2b unless otherwise noted)

305.	Beginning Arg.	2'3
310.	.75m	2'5
461.	.75m (2,2.1)	2'5
315.	.80m	2'7
463.	.80m (2,2.1)	2'7
320.	.85m	2'9
465.	.85m (2,2.1)	2'9
325.	.90m	2'11
467.	.90m (2,2.1)	2'11
330.	.95m	3'1
469.	.95m (2,2.1)	3'1



Hunter Ring 1 – Main Indoor – 8am Ghosts n Ghouls

18.	\$100 USHJA 2'9 Hunter	2'9
19.	\$100 USHJA 2'9 Hunter	2'9
132.	\$100 USHJA 3' Hunter	3'0
133.	\$100 USHJA 3' Hunter	3'0
23.	\$100 3'0 Green Hunter	3'0
24.	\$100 3'0 Green Hunter	3'0
28.	\$400 Doc Nissen 3'3 Performance	3'3
29.	\$400 Doc Nissen 3'3 Performance	3'3
137.	\$100 3'3 Green Hunter	3'3
138.	\$100 3'3 Green Hunter	3'3
122.	\$100 3'6 Performance Hunter	3'6
123.	\$100 3'6 Performance Hunter	3'6
38.	\$100 Green Working Hunter	3'6/3'9
39.	\$100 Green Working Hunter	3'6/3'9
152.	\$200 Performance Hunter	3'9/4'0
124.	3'6 Performance Hunter	U/S
40.	3'6/3'9 Green Hunter	U/S
153.	3'9/4'0 Performance Hunter	U/S

Hunter Ring 2 – Small Indoor – 8am Pumpkins a Go-Go

3.	USHJA 2' Hunter	2'
4.	USHJA 2' Hunter	2'
5.	USHJA 2' Hunter	U/S
8.	USHJA 2'3 Hunter	2'3
9.	USHJA 2'3 Hunter	2'3
10.	USHJA 2'3 Hunter	U/S
13.	USHJA 2'6 Hunter	2'6
14.	USHJA 2'6 Hunter	2'6
15.	USHJA 2'6 Hunter	U/S



NOT BEFORE 3PM

- 700. Hunter Breeding Yearling
- 702. Two Year Olds
- 704. Three Year Olds
- 706. BEST Young Horse
- 708. Pony Hunter Breeding Yearling
- 710. Two Year Olds
- 712. Three Year Olds
- 714. BEST Young Pony

Let's Show Tentative Schedule Friday, October 25

Jumper Ring 1 – 8am Anderson Ring • Witches n Warlocks

(All classes Table 2.2c unless otherwise noted)

351.	1.05m	3'5
368.	1.10m	3'7
354.	Children's	3'7
358.	A/A	3'7
371.	1.15m	3'9
376/377.	1.20m	3'11
361/362.	Jr/Am Modified	3'11
379/380.	Jr/Am Owners	4'1
385.	1.25m	4'1
389.	1.30m	4'3
343/344.	1.00m	3'3
334/335.	Low Children's	3'3
337/338.	Low A/A	3'3



Jumper Ring 2 – Boo's n Bones • 8am

(All classes Table 2.2c unless otherwise noted)

306.	\$500 Beginning Arg.	2'3
300.	Low Pony Jumpers (2.2B) Arg.	2'3
301.	Low Pony Jumpers Arg.	2'3
311.	\$500 .75m	2'5
391.	55 & O .75m	2'5
316.	\$500 .80m	2'7
321.	.85m	2'9
326.	\$500 .90m	2'11
209.	Cloverleaf Equitation	3'0
331.	.95m	3'1
347a.	Jump for a Jump (2.21) , Open	3'3
348a.	Jump for a Jump (2.21) , Non pro	3'3

Hunter Ring 1 – Main Indoor

Ghosts n Ghouls • 8am

108-109.	\$300 Evan's Handy Hunters	3'0
110.	Evan's Handy Hunters	U/S
908.	Warm Up Equitation	3'3
213.	PCHA 14 & U (Test in Course)	3'3
214.	PCHA 35 & O (Test in Course)	3'3
31-32.	Modified Jr/Am	3'3
160.	3'3 Junior Hunter	3'3
46-47.	3'3 A/O	3'3
49.	3'3 A/O	U/S
219.	ASPCA Maclay	3'6
40-41.	Jr. Hunter	3'6
43-44.	A/O Hunter	3'6
600.	Flat Phase Carolyn Day 30 & U	
608.	Flat Phase Carolyn Day 31 & O	
142.	Hunter U/S 70 & O	

500. Lead Line Equitation

\$18,000 Haunted Hunter Derby

Sponsored by Jem Stables
Class 450. 6pm – 3'0

Don't miss the wine and cheese party on the Berm,
presented by Jem Stables during the Hunter Derby

Hunter Ring 2 – Small Indoor Pumpkins a Go-Go – 8am

900.	Pony Equitation Warm-Up	2'3/2'6/2'9
200.	SAHJA Pony Medal	2'3
244.	Pony Equitation Over	2'3/2'6/2'9
104-105.	Green Pony Hunter	2'3/2'6/2'9
100-101.	Pony Hunters	2'3/2'6/2'9
245.	Pony Equitation	FLAT

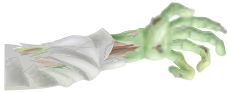
FIRST ROUND OF 2'3 ZONE 10 MEDAL CHALLENGE

Hunter Ring 3 • Tricks n Treats – 8am

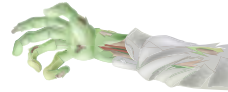
910.	Warm Up Hunter	2'0
80-81.	Short Stirrup Hunter	2'0
85-86.	Medium Stirrup Hunter	2'0
90-91.	Long Stirrup Hunter	2'0
75-76.	Short Stirrup Pony Hunter	2'0
911.	Warm Up Hunter	2'3
154.	Beginner CH/AA Hunter	2'3
155.	Beginner CH/AA Hunter	2'3
237.	Novice Equitation Over	2'3
606.	First Round Equitation for a Jump	2'3

Hunter Ring 4 • Bats n Belfrys – 8am

250.	Open Equitation	2'6
50-51.	Low Children's Hunters	2'6
55-56.	Low A/A Hunters	2'6
247.	Open Equitation	2'9
400.	Mod. Child/Adult Hunters	2'9
204.	Almaden Jr/Am Medal (Test in Course)	2'9
233.	14 & U Equitation Over	2'9
234.	15 to 17 Equitation	3'0
60-61.	Children's Hunters	3'0
235.	18 to 40 Amateur Equitation Over	3'0
236.	41 & O Amateur Equitation Over	3'0
207.	SAHJA Child/Adult (Test 4 on FLAT)	3'0



Let's Show Tentative Schedule Saturday, October 26



Jumper Ring 1 – 8am Anderson Ring Witches n Warlocks

(All classes Table 2.21 unless otherwise noted)

345.	1m	3'3
340.	\$3,000 Robyn Reichenberg Low Ch/AA Championship 2.2b	3'3
352.	1.05m	3'5
369.	1.10m	3'7
355.	Children's	3'7
391.	A/A	3'7
220.	WCE Jr/Am Medal	3'7
372.	1.15m	3'9
378.	1.20m	3'11
363.	Jr/Am Modified	3'11
386.	1.25m	4'1
381.	Jr/Am Owner	4'1



Approx. 6pm, \$2,500 Skyline Ranch, Judi Martin Mounted Costume Competition
Dinner will be sponsored by and served by Skyline Ranch.
7 & Under, 8 to 12, 13 to 17, 18 & Over and trainers – pairs & groups

Jumper Ring 2 – 8am Boo's n Bones

(All classes Table 2.21 unless otherwise noted)

307.	Beginning Arg.	2'3
302.	Low Pony Arg.	2'3
312.	.75m	2'5
392.	55 & O .75m	2'5
317.	.80m	2'7
322.	.85m	2'9
327.	.90m	2'11
333.	\$1,000 .95m Red Horse Classic 2.2a Non Pro	3'1
347b.	Jump for a Jump 2,2.1, Open	3'3
348b.	Jump for a Jump 2,2.1, Non Pro	3'3

Hunter Ring 1 - Main Indoor – 7:30am Ghosts n Ghouls

601-609.	Gymnastics Phase Carolyn Day Horsemanship 30 & U and 31 & O	2'0
912.	Warm Up Equitation	3'0
611.	First Round Eq For a Jump	3'0
65-66.	\$250 Joan Gamble AA Hunter 18 & O	3'
33-34.	Modified Jr/AM Hunters	3'3
161.	3'3 Junior Hunter	3'3
162.	3'3 Junior Hunter	3'3
35.	Modified Jr/Am	U/S
163.	3'3 Junior Hunter	U/S
48.	Low Amateur Owner Hunter	3'3
212.	USEF Adult (Test Top 4)	3'3
42.	Jr. Hunters 17 & U	3'6
45.	Amateur Owner Hunter	3'6
69.	Amateur Owner	U/S
59.	Jr. Hunter	U/S
216.	Nor Cal Jr. Medal 17 & U (Test Top 4)	3'6
217.	Nor Cal Sr. Medal 18 & O (Test Top 4)	3'6
218.	USEF Jr. Medal (Test Top 4)	3'6

Hunter Ring 2 - Small Indoor – 8am Pumpkins a Go-Go



Second Round of Zone 10 Medal Challenge and Work off 2'3

156.	Beginner CH/AA Hunter	2'3
157.	Beginner CH/AA Hunter	U/S
140.	Work at Will Equitation 70& O	
95-96.	Children's Pony Hunters Sm/Med 2'o, Lg 2'6	
99.	Children's Pony Hunter	U/S
106.	Green Pony Hunter	2'3/2'6/2'9
102.	Pony Hunters	2'3/2'6/2'9
202.	NorCal Pony Medal	2'3/2'6/2'9
107.	Green Pony Hunter	U/S
103.	Pony Hunter	U/S

Hunter Ring 3 – 8am Tricks n Treats

913.	Warm-Up Equitation	2'0
83.	Short Stirrup Equitation	2'0
88.	Medium Stirrup Equitation	2'0
93.	Long Stirrup Equitation	2'0
78.	Short Stirrup Equitation Pony	2'0
84.	Short Stirrup Equitation	Flat
89.	Medium Stirrup Equitation	Flat
94.	Long Stirrup Equitation	Flat
79.	Short Stirrup Pony Equitation	Flat
275.	Mini Stirrup Eq W/T/C	Flat
276.	Mini Stirrup US W/T/C	Flat
270.	Cross Rail Hunter	1'9
271.	Cross Rail Hunter	1'9
273.	Cross Rail Hunter	U/S
505.	Walk Trot Equitation, Open	
506.	Walk Trot Obedience, Open	
502.	Walk Trot Equitation, 8 & U	
226.	Novice Equitation 17 & U Flat	
227.	Novice Equitation 18 & O Flat	



Hunter Ring 4 - 8am Bats n Belfrys

238.	Limit Equitation Open	2'6
203.	SAHJA Mini Medal (Open Score Test in Course)	2'6
52.	Low Children's Hunters	2'6
57.	Low A/A Hunters	2'6
53.	Low Children's Hunter	U/S
58.	Low A/A Hunter	U/S
613.	\$2,500 Enchanted Farms Low Ch/AA Classic	2'6
248.	Open Equitation	2'9
401.	Modified Ch/AA	2'9
208.	Horse n Hound Jr/AM (Test in Course)	3'0
141.	Cross Bar Hunter 70& O	
509.	English Pleasure 17 & U	
510.	English Pleasure 18 & O	
517.	English Pleasure Gentlemen to Ride	
518.	English Pleasure Ladies to Ride	
508.	English Pleasure, Open	
221.	11 & U Flat Equitation	
222.	12 to 14 Flat Equitation	
223.	15 to 17 Flat Equitation	
224.	18 to 40 Flat Equitation	
225.	41 & Over Flat Equitation	
206.	NorCal 3' Jr. Am (Test Top 4)	3'0



THE TENTH ANNUAL
Heather Whitney
Grand Champion
Mounted Costume Contest
SATURDAY EVENING

Let's Show Tentative Schedule Sunday, October 27

Jumper Ring 1 – 8am Anderson Ring Witches n Warlocks

(All classes Table 2.2c unless otherwise noted)

332.	.95m	3'1
346.	1.00m	3'3
347c.	Jump for a Jump (2,2.1), Open	3'3
348c.	Jump for a Jump (2,2.1), Non pro	3'3
336.	Low Children	3'3
339.	Low A/A	3'3
392.	\$100 1.10 2.2c	3'7
360.	\$1,000 Teresa Amaro Ch/AA Championship	3'7
373.	1.15m	3'9
364.	\$500 Jr/AM Modified Championship 2.b	3'11
382.	\$500 Jr/AM Championship 2.b	4'1

Jumper Two – 8am Boo's n Bones

308.	\$2,500 The Hughes Law Firm Non-Pro/Beginning Championship 2a Arg.	2'3
303.	\$1,000 Low Pony Championship 2a Arg.	2'3
313.	\$1,000 .75m Non-Pro Championship 2a	2'5
393.	55 & O .75m	2'5
318.	\$1,000 .80m Non-Pro Championship 2a	2'7
323.	\$1,000 .85m Championship 2a	2'9
328.	\$500 .90m 2b	2'11

Hunter Ring 1 • Main Indoor – 7:30am Ghosts n Ghouls

602.	Final Phase Carolyn Day 30 & U	2'9
610.	Final Phase Carolyn Day 31 & O	2'9
	Work Off for Carolyn Day Grand Champion	
402.	Modified Ch/AA	2'9
403.	Modified Ch/AA	U/S
312.	Hunterville 3' Equitation for a Jump	3'0
67.	Joan Gamble A/A Hunter 18 & O	3'0
68.	Joan Gamble A/A Hunter 18 & O	3'0
69.	Joan Gamble A/A Hunter 18 & O	U/S
210.	Foxfield Medal 18 & O (Test Top 4)	3'3
263.	CPHA Jr/Am Found. Eq (test in course)	3'3
264.	CPHA Junior (workoff)	3'6

Hunter Ring 2 • Small Indoor – 8am Pumpkins a Go-Go

62.	Children's Hunters	3'0
63.	Children's Hunter	U/S
614.	\$1,000 Children's Hunter Championship	3'0
205.	Onondarka Medal 12 & U (Test Top 4)	3'0
249.	Open Equitation 17 & U	Flat
252.	Open Equitation 18 & O	Flat
512.	English Pleasure, Stallions & Geldings	
511.	English Pleasure, Mares	
513.	\$1,500 "Mocha Grande" English Pleasure Champ.	
241.	17 & U Equitation Championship	3'0
242.	18 to 40 Equitation Championship	3'0
243.	41 & Over Equitation Championship	3'0
228.	17 & U Equitation Flat Championship	
229.	18 to 40 Equitation Flat Championship	
230.	41 & O Equitation Flat Championship	
211.	JRW Jr/AM (Flat work in course)	3'3

Hunter Ring 3 & 4 - 8am

615. \$3,500 Nancy Patton Short/ Med/Long Stirrup Hunter Derby 2'0

Sponsored by Rosehill Stables

514. Nancy Gannon Children's Pony Hunter Derby 2'0/2'6

Hunter Ring 3 • Tricks n Treats at conclusion of Hunter Derby

77.	Short Stirrup Hunter Pony	U/S
82.	Short Stirrup 11 & U	U/S
87.	Medium Stirrup 12 to 17	U/S
92.	Long Stirrup 18 & O	U/S
607.	Final Round EQ for a Jump	2'3
501.	Leadline Equitation Championship	
507.	Walk Trot Obstacle, Open	
504.	Walk Trot Pleasure, Open	
503.	Walk Trot Equitation Champ. 8 & U	
231.	Novice Equitation Flat Championship	
232.	Limit Equitation Flat Championship	

Hunter Ring 4 • Bats n Belfrys at conclusion of Hunter Derby

97-98.	Children's Pony Hunters	2'0/2'6
201.	Horse & Hound Pony Medal	2'0/2'6
277.	Mini Stirrup Eq. Over	18"
278.	Mini Stirrup Hunter	18"
272.	Cross Rail Eq. Over	1'9
273.	Cross Rail Eq. Flat	1'9
246.	Pony Equitation Flat Championship	
239.	Novice Equitation Championship	2'3
240.	Limit Equitation Championship	2'6

DOG JUMPING AND DOG COSTUME CONTEST





Let's Show Halloween

October 23 - 27, 2019 - Sacramento, CA

Entries Close October 11, 2019



All exhibitors must have their current membership cards with them, a copy thereof, or send a copy of their card with their entry. OFFICE MUST SEE PONY or HORSE MEASUREMENT CARDS. Entry must be signed by owner, rider and trainer. No entry number will be given without complete signatures or open check.
 Make check payable to Let's Show and mail with entries to:
 Lauren Wasserman, P.O. Box 243, Davis, CA 95617
Please note: No fax or email entries accepted

OWNER			
Name			
Address			
City/State/Zip			
Phone ()		USEF/USHJA #	
Email		PCHA	Norcal
SS# _____ or FED ID# _____			

TRAINER/COACH			
Name			
Barn Name			
Address			
City/State/Zip			
Phone ()		USEF/USHJA #	
Email		PCHA	Norcal

PRIZE MONEY PAYEE (if different than Owner/Agent)			
Payable To			
Address			
City/State/Zip			
SS# _____		or FED ID# _____	
Arrival Date:	Stable With:		

RIDER ONE (1) INFORMATION			
Name			
Address			
City/State/Zip			
USEF/USHJA #		US Citizen? (Circle one): YES NO	
Amateur - Birthdate		Junior - Birthdate	
NorCal		PCHA	

RIDER TWO (2) INFORMATION			
Name			
Address			
City/State/Zip			
USEF/USHJA #		US Citizen? (Circle one): YES NO	
Amateur - Birthdate		Junior - Birthdate	
NorCal		PCHA	

NAME OF HORSE						HORSE USEF # and TYPE		RIDER	CLASS NUMBERS ENTERED																	
						<input type="checkbox"/> Rec # <input type="checkbox"/> ID #		1																		
Color	Age	Sex	Height	Circle Green Status 1st Yr 2nd Yr	Circle Junior Hunter or Pony Size Small Medium Large	<input type="checkbox"/> Measurement		2																		

USEF ENTRY AGREEMENT

I have read the United States Equestrian Federation, Inc. (the "Federation") Entry Agreement (GR906.4) as printed in the Prize List for Let's Show Halloween Championship ("Competition") and agree to all of its provisions. I understand and agree that by entering this Competition, I am subject to Federation Rules, the Prize List, and local rules of the Competition. I agree to waive the right to the use of my photos from the Competition, and agree that any actions against the Federation must be brought in New York State.
Federation Release, Assumption of Risk, Waiver and Indemnification. This document waives important legal rights. Read it carefully before signing.
I AGREE in consideration for my participation in this Competition to the following:
I AGREE that "the Federation" and "Competition" as used herein includes the Licensee and Competition Management, as well as all of their officials, officers, directors, employees, agents, personnel, volunteers and Federation Affiliates
I AGREE that I choose to participate voluntarily in the Competition with my horse, as a rider, driver, handler, vaulter, longeur, lessee, owner, agent, coach, trainer, or as a parent or guardian of a junior exhibitor. I am fully aware and acknowledge that horse sport and the Competition involve inherent dangerous risks of accident, loss, and serious bodily injury including broken bones, head injuries, trauma, pain, suffering or death. ("Harm")
I AGREE to hold harmless and release the Federation and the Competition from all claims for money damages or otherwise for any Harm to me or to my horse and for any Harm of any nature caused by me or my horse to others, even if the Harm arises or results resulted, directly or indirectly, from the negligence of the Federation or the Competition.
I AGREE to expressly assume all risks of Harm to me or my horse, including Harm resulting from the negligence of the Federation or the Competition.
I AGREE to expressly assume all risks of Harm to me or my horse, including Harm resulting from the negligence of the Federation or the Competition.
I AGREE to indemnify (that is, to pay any losses, damages, or costs incurred by) the Federation and the Competition and to hold them harmless with respect to claims for Harm to me or my horse, and for claims made by others for any Harm caused by me or my horse while at the Competition. I have read the Federation Rules about protective equipment, including GR801 and if applicable, EV114, and I understand that I am entitled to wear protective equipment without penalty, and I acknowledge that the Federation strongly encourages me to do so while WARNING that no protective equipment can guard against all injuries. If I am a parent or guardian of a junior exhibitor, I consent to the child's participation and AGREE to all of the above provisions and AGREE to assume all of the obligation of this Release on the child's behalf. I represent that I have the requisite training, coaching and abilities to safely compete in this competition.
I AGREE that if I am injured at this competition, the medical personnel treating my injuries may provide information on my injury and treatment to the Federation on the official USEF accident/injury report form.
 By signing below, I agree to be bound by all applicable Federation Rules and all terms and provisions of this Prize List. If I am signing and submitting this Agreement electronically, I acknowledge that my electronic signature shall have the same validity, force and effect as if I affixed my signature by my own hand.

DEPOSIT AMOUNTS DUE WITH THIS ENTRY	
Horse Stalls	\$275 x _____ = \$ _____
Tack Stalls	\$275 x _____ = \$ _____
Schooling	\$35 x _____ = \$ 35
Late Fee	\$30 x _____ = \$ _____
Grounds Fee	\$50 x _____ = \$ _____
Reservation	\$40 x _____ = \$ 40
R.V. Fee	\$300 x _____ = \$ _____
TOTAL AMOUNT ENCLOSED	\$ _____

OWNER (Mandatory)	RIDER/HANDLER 1 (Mandatory)	RIDER/HANDLER 2
Signature:	Signature:	Signature:
Print Name:	Print Name:	Print Name:
TRAINER/COACH (Mandatory)	PARENT/GUARDIAN (if Rider 1 is a minor)	PARENT/GUARDIAN (if Rider 2 is a minor)
Signature:	Signature:	Signature:
Print Name:	Print Name:	Print Name:

FEES			
USEF Horse Fee	\$23	PCHA Fee	\$3
USHJA Fee	\$2	Norcal Fee	\$3
USEF Show Pass	\$45	CA Drug Fee	\$5
USHJA Show Pass	\$30		



Join us for

TRICK OR TREATING

1. Get a bag from the Awards Room.
2. Go to barns and vendors Saturday from 1pm to 4pm for your treats!



Staff

COSTUME CONTEST!

Our Halloween exhibitors will vote for their favorite staff costume. Check out their costumes and then go to the trophy room to vote for your favorite. One vote for the best male costume and one vote for the best female contest per exhibitor. The winning staff members will each win \$200.

Make Sure You Vote!

YOU ARE INVITED TO A

HALLOWEEN
PARTY
&
COSTUME CONTEST



Saturday Night

Best Halloween Party Ever!

Join us for a Halloween party on the berm following the Mounted Costume Contest. Prizes will be given for best costumes at the party.

COSTUME CLASSES MOUNTED COSTUME

Sponsored by
Skyline Ranch & Judi Martin
*Dinner will also be sponsored by
and served by Skyline Ranch*

7 & under

8 to 12

13 to 17

18 & over and trainers

Pairs and Groups

Top five in each section to win \$100 each

THE BARN DECORATING CONTEST



Two Categories!

Barns with 10 or less stalls • Barns with 11 and over stalls

Barn decorating awards given to small barns 10 stalls or less and large barns 11 stalls and more. Judging Saturday, awards presented at the Halloween Party after the mounted costume contest

Winner of the Barn Decorating Contest will receive the new Perpetual Trophy!!!

Awards sponsored by Rosehill Stables.

New Prizes: \$500 to 1st Place, \$250 2nd Place, \$100 3rd Place





HOST HOTEL



Holiday Inn

Newly Renovated
High Speed Internet
Outdoor Pool
Fitness Center
Hot Breakfast
On-Site Starbucks



11269 Point East Dr. • Rancho Cordova, CA 95742
916-635-4040 • 866-909-1182



MEDAL Specifications



ALMADEN JUNIOR & SENIOR: Open to Junior and Amateur riders. The class may be held over hunter or jumper type fences at 2'9 in height. Three riders must enter for the class to count. Any rider showing in classes with fences over 3'3 in height at the same show may not show in this medal. The course must include a combination, two changes of direction and two tests built into the course, ie: trot, halt, back, etc. Additional testing is at the judges discretion. First and second place qualify for the finals. Medal finals will be held Brookside Equestrian Park in July.

ASPCA HORSEMANSHIP CLASS, 17/UNDER: To be judged on hands, seat, guidance and control of the horse. All contestants are required to perform over at least eight fences not exceeding 3'6 with or without wings. A minimum of twelve riders, if available, are required to show at the walk, trot and canter. The Under Saddle performance of those riders selected to show under saddle shall count 50%. Only one rider per horse. (USEF Tests 1-19) Three riders must complete the course.

CPHA FOUNDATION EQUITATION: Open to Junior and Amateur riders who are current members of the CPHA and PCHA. Judged over an equitation type course of at least 8 fences 3'3 in height with at least 2 USEF tests (1, 2, 6, 10, 12, 15,17, 18) included in the course. Three riders must compete and complete the course in order for the class to count as a qualifier.

CPHA JR MEDAL: Five must compete, three must complete the course. Trainer and Rider must be CPHA members. Fences 3'6, same course as a USEF Jr. Medal. Top 3 riders test after the first round.

THE CLOVERLEAF EQUITATION CLASSIC: Class is open to Junior & Amateur riders not showing in any classes over 3'7 in height. To be judged over a Jumper course of not less than 9 fences at 3 feet in height. To be judged on hands, seat, guidance & control of the horse on a Jumper type of ride. There will not be a time allowed; a tone will be used to signal the rider to start the course. Any Jumper type bit or equipment is allowed. Jumping penalties will be considered in accordance with USEF Equitation rules. Additional work-offs after the initial round will be at the Judge's discretion, and any number of riders may be asked to test. At least 3 riders must enter & show in the class. First & second place winners will be qualified for the finals. Winner of the finals will receive a golf cart & a cooler, prizes to 8th place.

FOXFIELD MEDAL CLASS: Open to adult amateur riders who are current members of the PCHA. If a class has 40 riders, it must be split: 18 thru 30 and 31 & over. Foxfield encourages the 31 & over division; so if there are 15 riders in this age division, please split the class. The class is to be judged over a figure eight course of 3'3

fences. Two or more tests of the top three or four riders are required. Only one rider per horse. Points will be awarded in qualifying classes as follows: 10, 6, 4, 2, 1 providing there are at least five who complete the course. If there are less than five eligible ribbon winners, points will be awarded by the same scale using the lowest numbers. For example, if there are four ribbons awarded, the points will be 6, 4, 2, 1. Three riders must enter to fill the class and three riders must complete the course for points to count. Ten points qualify a rider for the Foxfield Medal Finals in Westlake Village in the fall of the year. Qualified riders may continue to compete in the class until the Finals.

HORSE & HOUND JR/AM MEDAL: Open to riders that have not won a 3'6 or higher medal finals in the last 3 years and are not showing 3'6 or higher at this show. Hunter or jumper type course at 3' with 2 tests included in the course. 5 points qualified for the finals. Previous winners of the Horse & Hound medal finals are no longer eligible.

HORSE & HOUND PONY MEDAL: To be shown over a course of fences (Sm/Med to jump 2'3, Lg to jump 2'6) with 2 tests included. Riders may not show 3'6 or higher at this show. Previous winners of the medal finals are no longer eligible to compete. Points and qualifying same as the Horse & Hound Jr/Am Medal. A sterling silver pendant will be given to the winner of a qualifying class with 5 or more entries.

RJW JUNIOR/AMATEUR: To be shown over a course of Hunter/Jumper type fences approx. 3'3, with flat work incorporated into the course. NO work-off is required, but further testing is at the judge's discretion. Points awarded to the top 8 riders (8-7-6-5-4-3-2-1) six points will be doubled in classes with 15 or more. Six points required to qualify a rider for Finals. Five riders must complete the course.

NORCAL JUNIOR & SENIOR: Open to junior/amateur members of NorCal. Trainers of contestants must also be members. To be shown over a course of not less than 8 fences 3'6 in height. Either hunter or jumper type fences may be used. The course must include at least 2 changes of direction, and a combination containing an oxer. No triple combinations, water jumps or liverpools are allowed. Two or more tests of the top 4 riders will be required (Tests 1-19). Any exhibitor failing to return for the work-off will automatically be placed last of those called back. Jr. Medal (3) must complete and Sr. Medal all riders who complete the course will qualify for the finals. Seven points qualifies a rider for the Finals, but winners may continue to compete in the class throughout the year. If fewer than 5 riders complete the course, no medal will be awarded but points will be awarded as follows: 4 riders- 5-3-2-1, 3 riders- 4-2-1, fewer than 3 complete- no points will be given.

NORCAL 3 FT JR./AM. MEDAL: May be offered in the Hunter or Jumper ring. Open to all juniors and amateurs who have not won a 3'6 medal in the preceding 5 years and who are not showing 3'6 medals or hunters at this show. Trainers of contestants must also be members. Same specifications as the junior and senior medals, with the exception that fences shall be 3-ft. Work-off of the top 4 riders is mandatory. Points awarded the same as for junior and senior medals, 7 points needed to qualify for the finals. Winners may continue to compete in the class throughout the year. Any NorCal Medal class with more than 20 contestants will be pointed through 8th place as follows: 10-8-7-6-5-4-3-2.

NORCAL PONY EQUITATION MEDAL: Open to current junior members of the NorCal Hunter Jumper Association. Trainers of contestants must also be members of NorCal. No junior over 12 years may compete on a small pony, and no junior over 14 years may compete on a medium pony. Riders in this class may not enter a NorCal Junior Medal class at the same show. Fence heights will be according to USEF specifications for small, medium and large ponies. Course will incorporate a work-off of at least two tests. Two riders must complete the course. One rider per pony.

PCHA HORSEMANSHIP 14/U: This class is designed as an intermediate equitation class for riders 14 years of age and under who are current PCHA members. A rider who will not be 14 years old (horse show age) or under on the date of the Finals may not compete in the class. To be held over a course of at least eight (8) fences about 3'3 in height. Hunter-type fences are encouraged. One combination must be included and at least two changes of direction with two tests included as part of the original course. No workoff is required; but further testing is at the judges discretion. To fill a class, three competitors must complete the course. Riders may qualify by achieving the necessary 12 points or by winning a class of five or more entries. Qualified riders will receive a medal. Regardless of how many points he/she accumulates, a rider can continue to compete in qualifying classes until he/she has won a class of five or more entries.

PCHA HORSEMANSHIP 35/OVER: This class is open to riders 35 years of age and over (horse show age) who are current PCHA members. Same as 14 & under.

ONONDARKA HUNTER SEAT MEDAL: For riders 12 years of age and under, current members of the PCHA, who will not be older than 12 (USEF horse show age) when Final is held. Three (3) contestants must complete the course in order for points to count. Points to be awarded to the top three riders as follows: 5 or more: 12, 6, 4; 4: 6, 4, 2; 3: 4, 2, 1. Twelve points or more qualify a rider for the Onondarka Final. To be judged over a course of 3'0 fences. Combinations are permitted. Work off is required of at least 4 (if available) without a major fault. Tests 1 - 18. Major faults include trotting, loss of stirrup,

loss of reins, refusal or a numerical score of less than 60. Only one rider per horse. Conventional equipment recommended. Unconventional equipment penalized at judge's discretion. Riders may continue to ride in the qualifying classes until they win a class with a minimum of 5 entries, regardless of how many points he/she accumulates. The official Onondarka medal will be presented only to those who win a class with 5 or more riders completing the course.

SAHJA PONY MEDAL: Open to Junior riders showing ponies (14.2 hands and under). To be judged over a course of fences ranging from 2'0 to 2'6 in height, with two USEF tests (1-9) incorporated in the course. There is no work-off. Open scoring must be used. Points awarded based on number of riders in the class. Five points to qualify for finals.

SAHJA MINI MEDAL: Open to any Junior or Amateur rider who has not won a rated 3'6 medal class or any medal finals, except the SAHJA Pony Medal. Riders to be judged over a course of fences 2'6 in height, with at least two USEF tests (1-19) incorporated into the course. There is no work-off. Open scoring must be used. Points awarded based on number of riders in the class. Five points to qualify for finals.

SAHJA CHILD/ADULT MEDAL: Open to any Junior or Amateur rider. Riders to be judged over a course of fences 3'0 in height. At least the top four will return for a flat work-off. Open scoring must be used. Points awarded based on number of riders in the class. Five points to qualify for finals.

DOVER SADDLERY/USEF JUNIOR MEDAL: Open to junior members of USEF. Fences 3'6. Two or more tests of top 4 required. For class to count, three riders must complete the course.

USEF ADULT EQUITATION: Open to Amateur Senior Members of the USEF. To be shown over a course of not less than eight obstacles at 3'3. Two or more tests of the top four competitors are required. To fill a class three competitors must complete the course. Only one rider per horse.

USEF/MARSHALL & STERLING PONY MEDAL: Open to junior members of USEF who have not reached 18th birthday on ponies 14.2 hands under. Riders in this class cannot cross enter the USEF Jr. Medal at same show. Two tests included in the course. For class to count three riders must complete the course.

Equipment: no restrictions on saddles. Change of bridle is permissible between phases. No martingales of any kind are permitted in the flat phase. Only running martingales used in the conventional manner are permitted in the jumping phase. Standing martingales, draw reins, and restricted running martingales are prohibited. Reins must be attached to the bit(s) or directly to the bridle. Gags and hackamores are not allowed in the flat phase.

SAHJA Pointed Classes

Low Open Hunters – Classes 12, 13, 14, 15
Low Children's Hunters – Classes 50, 51, 52, 53
Low Adult Hunters – Classes 55, 56, 57, 58
Children's Hunters – Classes 60, 61, 62, 63
Adult Amateur Hunters – Classes 66, 67, 68, 69
Modified Hunters – Classes 26, 27, 28, 30
Short Stirrup – Classes 80, 81, 82, 83, 84
 Long Stirrup
Classes 85, 86, 87, 88, 89, 90, 91, 92, 93, 94
Mini Stirrup – Classes 275, 276, 277, 278
 Junior Pleasure
Classes 508, 509, 511, 512, 513, 517, 518
 Senior Pleasure
Classes 508, 510, 511, 512, 513, 517, 518
Hunter Breeding – Classes 700, 702, 704

Pony Hunter Breeding – Classes 708, 710, 712
Walk-Trot 8 & Under – Classes 502, 503
 Junior Equitation
Classes 221, 222, 223, 228, 233, 234, 241
 Amateur Equitation
Classes 224, 225, 229, 230, 235,
 236, 242, 243
 Kindergarten Jumpers
Classes 321, 322, 327, 328
 Child/Adult Jumpers
Classes 334, 335, 336, 337, 338, 339
 Training Jumpers – Classes
 344, 345, 351, 352
 Future Jumpers
305, 306, 307, 308
 Pony Hunters
96, 97, 98, 99

EYEBALL HUNT



Sunday – 10 am

**Meet at the Trophy Room
Ages 10 & under! Bring a carry bag!**



Rules & General Information



LIFE, SENIOR ACTIVE AND JUNIOR ACTIVE MEMBERS SHALL BE ELIGIBLE TO PARTICIPATE IN ALL CLASSES AT REGULAR COMPETITIONS, EVENTING COMPETITIONS AT THE PRELIMINARY LEVEL OR ABOVE AND COMBINED DRIVING COMPETITIONS AND ENDURANCE RIDES. A NONMEMBER MAY PARTICIPATE AS A HANDLER, RIDER, DRIVER, OWNER, LESSEE, AGENT, COACH OR TRAINER AT REGULAR COMPETITIONS AND COMBINED DRIVING COMPETITIONS UPON PAYMENT OF A \$30 SHOW PASS FEE. PARTICIPANTS IN THE FOLLOWING CLASSES ARE EXEMPTED FROM THE REQUIREMENTS OF THIS RULE: 1) LEADLINE; 2) EXHIBITIONS; 3) GAMES AND RACES; 4) CLASSES FOR 4-H MEMBERS; 5) WALK TROT AND ACADEMY CLASSES (ACADEMY CLASSES ARE CLASSES LIMITED TO HORSES USED REGULARLY IN A LESSON PROGRAM); 6) USDF INTRODUCTORY LEVEL TESTS, PAS DE DEUX AND QUADRILLE CLASSES; 7) NRHA ENDORSED REINING COMPETITIONS; 8) OPPORTUNITY CLASSES; 9) CITIZENS OF OTHER NATIONS WHO HAVE PROOF, IN ENGLISH, OF CURRENT MEMBERSHIP IN GOOD STANDING OF THEIR OWN NATIONAL FEDERATION; 10) USEA BEGINNER NOVICE DIVISION; AND 11) ASSISTANT HANDLERS IN DRESSAGE SPORT HORSE BREEDING CLASSES.

ENTRY PROCEDURE: Care should be taken to enter each horse in its proper division or class. Exhibitors are responsible for their errors and those of their agents in completing entry blanks. In all cases the description on the entry blank must fully identify the horse. The word "entry" shall not be accepted. Stipulations for entry blank: 1. Be properly signed and in the case of a minor, be signed by a parent or guardian. 2. Be made on an entry blank provided by the show. 3. Show the correct mailing address of the owner. 4. Social Security number must be on the entry blank. 5. Include copy of USEF membership card or pay \$45 show pass fee for each owner, lessee, agent, trainer, and rider. 7. Include copy of USHJA membership card or pay \$30 non-membership fee for each owner, lessee, agent, trainer and rider. 8. Include PCHA membership numbers. 9. Include all additional membership numbers and birth dates of jr. and amateur riders. Please attach photocopies of USEF Amateur cards, USEF pony measurement cards, or USEF Jr. Hunter cards as applicable for entries. 10. Include USEF Horse Recording number for horses in Jumper classes requiring number. 11. For each horse entered send a \$225 stall fee and \$35 schooling fee. Send with your completed entry blank on or before the closing date. If entries are post-marked not later than the closing date and are properly filled out no late fee will be charged.

POST ENTRIES: Accepted at management's discretion. Pay a \$5 post entry fee for each class added or changed (see also Illegal Entry Penalty)

CONDITION OF ENTRY: Every horse entered in competition will be under control of the Horse Show Management, but Management will, in no case, be responsible for any loss or damage that may occur, and it shall be the condition of the entry that each exhibitor shall hold the Horse Show, its directors and employees, and Murieta Equestrian Center harmless for any loss or accident to his/her horse(s) or equipment which may occur from sickness, fire or otherwise. All owners and exhibitors will be held accountable for any damage incurred by them, their agents, or employees,

to the stalls, buildings, and other properties on the show grounds and shall be billed accordingly.

MINOR EXHIBITORS: Parent(s) or guardian(s) of minor exhibitors shall hold the Horse Show Management and facility harmless for any injury to such minor. No child's entry will be accepted or number issued unless the entry is signed by a parent or guardian.

REFUNDS: Before the closing date of entries, full refunds will be given. After the closing date, with veterinarian or doctors certificate, refunds will be given less a \$35 office charge, and less fees held prior to notification at the Horse Show Office, whether exhibited in or not. Stall fees may be refunded if canceled by October 7, 2019.

PRIZES: Awards to 1st place in all classes, ribbons 1st-8th. Prize money will be made payable to the owner listed on the entry blank (unless other arrangements are made with the Horse Show Office) and mailed within 30 days. **NO PRIZE MONEY WILL BE PAID UNLESS OWNERS SOCIAL SECURITY NUMBER IS LISTED ON THE ENTRY BLANK.** In all classes with add-back, prize money is computed from the number of horses that actually show. Horses entered but not showing will forfeit their add-back money to Management unless they scratch before the class. All money classes under \$500 will be divided 30%, 25%, 20%, 15%, 10%. All \$500 prize money classes will be paid: \$150, \$100, \$75, \$65, \$60, \$50. All \$1,000 and over prize money classes will be paid: 30%, 22%, 15%, 10%, 7%, 6%, 5%, 5% unless otherwise noted.

MANAGEMENT: The Horse Show Management reserves the right to interpret all questions & conditions in regard to or arising out of or incident to the show without claims for damages or recourse of any kind. All questions not covered in these rules and regulations shall be decided by Horse Show Management, their decision to be final. The Horse Show Management reserves to itself the right to refuse, accept conditionally, or to cancel any entries, disqualify riders or exhibitors,

prohibit exhibition of entries and cancel award prizes, without claim for damages; to cancel or combine any unfilled classes; to change rings or rotate judges; to change specifications in jumper classes in order to facilitate the time schedule. Management reserves the right to limit entries at its discretion.

TRANSFERS: The transfer of a horse and/or riders from one class/division to another will be allowed as follows:

a) Credit will be given for scratched classes, but post entries must be paid for all added;

STABLING: Stalls and tack rooms will be available for \$275 each. No bedding included. Stalls are of portable construction, 10' x 10' with top and bottom doors. Stalls will not be available prior to 8AM, Monday, October 21 unless specific arrangements are made with show management.

FEED & BEDDING: Must be ordered directly from the farm included in this book and sent prior to the show.

GROUND'S FEE: All horses entering the show and not using a stall will pay a \$50 per day grounds fee, used to offset facility cost, clean up, and amenities.

RV PARKING: Parking in RV lot ONLY. Must contact MEC (916) 985-7334 for reservations.

COURSES: Courses may consist of any combination of the following: brush, gate, oxers, panels, post & rails, coops & walls.

RETURNED CHECKS: Checks returned by the bank for any reason are regarded as a most serious offense and will be handled as follows: ALL RETURNED CHECKS WILL BE CHARGED AN ADDITIONAL 10% PENALTY (\$25 MINIMUM), accounts will be given 10 days to be paid in full with cash or money order, or they will be turned in to the sanctioning organizations for further disciplinary action.

NON-SHOWING HORSES: For any horse on the grounds and not officially entered, owner or trainer of said horse must complete a "Not to Show" form, sign a release at the Horse Show Office, and pay a \$50 facility fee unless renting a stall plus a \$35 schooling fee.

SCHOOLING FEE: Schooling will be allowed in all arenas on Tuesday at approximately 1pm and at the end of each show day with time permitting. NO SCHOOLING IN ARENAS AFTER COURSES HAVE BEEN SET FOR THE FOLLOWING DAY. Mandatory schooling fee for all horses: \$35.

MOTORIZED VEHICLES: Minors who do not have a valid driver's license which allows them to operate a motorized vehicle of any kind including, but not limited to, golf carts, motorcycles, scooters, or farm utility vehicles on the competition grounds of recognized competitions. Minors who have a valid temporary license may operate the above described motorized vehicles if accompanied by an adult with a valid driver's license. Violations of this rule will be cause for action against the parent(s), guardian(s) and/or trainer(s) who are responsible for the child committing the offense. Penalties may include the exclusion of the child, parent(s), guardian(s) and/or trainer(s) from the competition grounds for the remainder of the competition and charges being filed against above individuals in accordance with Rule 6. Wheelchairs and other mobility assistance devices for individuals with disabilities are exempt from this rule.

ATTIRE: All persons at Federation licensed hunter, jumper or hunter/jumper competitions in all Hunter, Jumper and Hunt Seat Equitation classes, when mounted anywhere on the competition grounds, must wear properly fastened protective headgear which meets or exceeds ASTM (American Society for Testing and Materials)/SEI (Safety Equipment Institute) standards for equestrian use and carries the SEI tag. It must be properly fitted with harness secured. This rule, effective April 1, 2012 puts the onus on parents and trainers to make sure that all exhibitors wear one of the 65 helmets that are currently approved by the American Society of Testing Materials/Safety Equipment Institute. Under the rule, judges, stewards and show management are obligated to check out helmets they suspect may not be ASTM-SEI approved and to prevent all exhibitors from competing if the helmet does not comply with the new rule.

ARENAS AND FOOTING: All arenas and warm-up rings are GGT footing. Hunter Ring 1 measures 120'x250'; Hunter Ring 2 measures 230'x115'; Ring 3 measures 120' x 240'; Jumper Ring 1 is 280'x140'; and Jumper Ring 2 is 180'x216'



MARK YOUR CALENDARS FOR 2020

MARCH 27-29
APRIL 1-5

BROOKSIDE WELCOME
BROOKSIDE PREMIER
BROOKSIDE EQUESTRIAN PARK



JUNE
3-7

LET'S SHOW **BEACH PARTY**
BROOKSIDE EQUESTRIAN PARK

FEATURING
\$5,000 BROOKSIDE CUP JUMPER RELAY
\$5,000 TRAINER EQUITATION, \$9,999 CAVALLO HUNTER DERBY
FLAMINGO & PALM TREE EQUITATION, PINK FRIDAY,
HAWAIIAN SHIRT WEEKEND



JUNE
18-21

BROOKSIDE SPLASH
BROOKSIDE EQUESTRIAN PARK
LOTS OF SUMMER FUN – SAHJA APPROVED



JULY
22-26

ALMADEN FARMS
SUMMER SHOW
BROOKSIDE EQUESTRIAN PARK
FEATURING THE ALMADEN FARMS MEDAL FINALS



OCTOBER
1-4

LET'S SHOW **FALL FESTIVAL**
BROOKSIDE EQUESTRIAN PARK
FEATURING THE CLOVERLEAF MEDAL FINALS,
\$5,000 CAROLYN ATKINSON HUNTER DERBY



OCTOBER
7-11

BROOKSIDE
FALL FINALE
BROOKSIDE EQUESTRIAN PARK
FEATURING THE
NORCAL EQUITATION CLASSICS
ZONE 10 MEDAL CHALLENGE
BROOKSIDE HUNTER DERBY FINALS

Fall  Finale

OCTOBER
21-25

LET'S SHOW **HALLOWEEN**
MURIETA EQUESTRIAN CENTER
FEATURING
\$18,000 HUNTER DERBY
\$1,500 CHILDREN'S PONY HUNTER DERBY
\$2,500 MOUNTED COSTUME CONTEST
ZONE 10 2'3 EQ CHALLENGE
\$18,000 BUBBA GRAND PRIX
DOG JUMPING AND DOG COSTUME CONTESTS





Pacific Coast Horse Show Association
P.O. Box 5570, Glendale, CA 91221
(818) 842-8194

MEMBERSHIP APPLICATION

- NEW RENEWAL
 Senior: \$75.00 Junior/Western Junior: \$55.00 Life: \$1,000.00
 SPECIAL – Senior for 3 years: \$200.00 SPECIAL – Junior for 3 years: \$150.00*
*no increase if a junior becomes a senior during 3 year plan
 STEWARD SHOW MANAGER SHOW CONTACT

NAME _____

ADDRESS _____

CITY / STATE _____ ZIP _____

TELEPHONE _____ E-MAIL _____

DATE OF BIRTH REQUIRED _____

- Amateur Professional Hunter/Jumper Western

CREDIT CARD VISA _____ MC _____ # _____ Check# _____

NAME ON CARD _____

BILLING ADDRESS _____

EXPIRATION DATE _____ 3 DIGIT CODE _____

NAME OF TRAINER _____



Pacific Coast Horse Show Association
P.O. Box 5570, Glendale, CA 91221
(818) 842-8194

HORSE REGISTRATION

Horse must be registered to complete for Year End Awards

SHOW NAME OF HORSE _____

- Hunter/Jumper Western

Color _____ Sex _____ Ht. _____ Yr. Foaled _____ Breed _____

OWNER OF HORSE _____

(OWNER MUST BE PCHA MEMBER)

- YEARLY REGISTRATION: \$40.00 LIFETIME REGISTRATION: 100.00

- SHOW NAME CHANGE: \$10.00

FORMER NAME _____

- TRANSFER OF OWNERSHIP: \$10.00

FORMER OWNER _____



NORCAL HUNTER JUMPER ASSOCIATION 2019 MEMBERSHIP APPLICATION

PO BOX 243 . DAVIS, CA 95617

PO Box 243
Davis, CA
95617

- NEW
- RENEWAL

- ANNUAL \$50
- LIFE \$500

- JUNIOR
- AMATEUR
- PROFESSIONAL

MEMBER INFORMATION

NAME

ADDRESS

CITY

STATE

ZIP

E-MAIL

I do not want NorCal to release my email address.

TELEPHONE

CELL PHONE

DOB: (REQUIRED) / /

TRAINER

- ANNUAL \$35
- LIFE \$100
- NAME CHANGE \$5
- TRANSFER OF OWNERSHIP \$5

CHECK SIZE FOR PONY

- SMALL
- MEDIUM
- LARGE

HORSE 1

*HORSE NAME

USEF#

FOR TRANSFER, PLEASE LIST FORMER OWNER'S NAME
*HORSE REGISTRATION MUST BE PAID BEFORE POINTS CAN ACCRUE.

- ANNUAL \$35
- LIFE \$100
- NAME CHANGE \$5
- TRANSFER OF OWNERSHIP \$5

CHECK SIZE FOR PONY

- SMALL
- MEDIUM
- LARGE

HORSE 2

*HORSE NAME

USEF#

FOR TRANSFER, PLEASE LIST FORMER OWNER'S NAME
*HORSE REGISTRATION MUST BE PAID BEFORE POINTS CAN ACCRUE.

PAY BY CREDIT CARD

NAME

CC#

EXP. DATE

CVC

BILLING ADDRESS

ZIP

GIPSON GOLF CARTS

Call Zach at (916) 806-0920
or email ZachBowden@sbcglobal.net



**Rent
a cart
for the
shows!**

Stay on Show Grounds!



RENT A MOTOR HOME!

CALL SVEN 916-531-7123

USEF Competition Name: **Let's Show**

USEF#: 300268

Competition Division(s) and Rating(s):

'A' Pleasure

'B' Green AO & JR Hunters, Pony, Performance

'C' Children's A/A Hunters Pre-Green

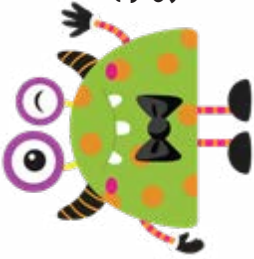
ATTENTION COMPETITORS

USEF SAFE SPORT TRAINING REQUIREMENT

Starting January 1, 2019, if you are a USEF Competing Member 18 years of age or older you are required to complete the core Safe Sport Training within 30 days of activating your membership.

If you do not complete the training, you are ineligible to participate in all USEF activities including competitions.

TAKE the SAFE SPORT TRAINING at [USEF.org](https://www.usef.org) by logging into your member dashboard.



**3304 Shasta Dam Blvd., Sp 37
Shasta City, CA 96019**

No move in until
Monday 3pm!

Presorted
First Class
US Postage
PAID
Permit 33
Orangevale, CA

Return Service
Requested

DIRECTIONS TO MURIETA EQUESTRIAN CENTER

7200 Lone Pine Dr. Rancho Murieta, CA 95683 (916) 985-7334

From San Francisco:

Highway 80 to Sacramento
Highway 50 to Bradshaw exit
South (right) on Bradshaw Jackson Highway
East (left) on Jackson Highway
8 miles to Murieta Equestrian Center

From Stockton:

Highway 99 North
Exit Dillard Road
Northeast (right) on Dillard Rd to Jackson Hwy
East (right) on Jackson Highway to
Murieta Equestrian Center

From Reno:

Highway 80 toward Sacramento
Exit Sierra College Blvd. (becomes Hazel)
South on Sierra College Blvd (Hazel) to Hwy 50
West on 50 to Sunrise Blvd. South
Sunrise Blvd. South to Jackson Highway
East (left) on Jackson Highway to
Murieta Equestrian Center

